

SURGICAL BLADES & SCALPEL HANDLES



Product

Surgical blades are used for cutting skin and tissue during surgical procedures. The most common type of scalpel blade used in surgery is the non-attached, replaceable blade.

Features blades

- ✓ designed for tissue cutting and puncturing
- ✓ carbon steel material for exacting performance
- ✓ special edge treatment reduces drag and tissue trauma
- ✓ provide consistent sharpness – right out of the box
- ✓ fits all makes of handles - conforms to ISO 7740

Attributes handles

- ✓ slotted handle for better grip - provides greater strength and control
 - ✓ durable stainless steel material
 - ✓ swift lock fixation on handle
- weight 24 g
large 13,8 cm

Packaging

gamma sterilized
individually packaged in easy peel color coded foil for maximum safety
wrapped in aluminum V.C.I paper



*For quality
&
safety*

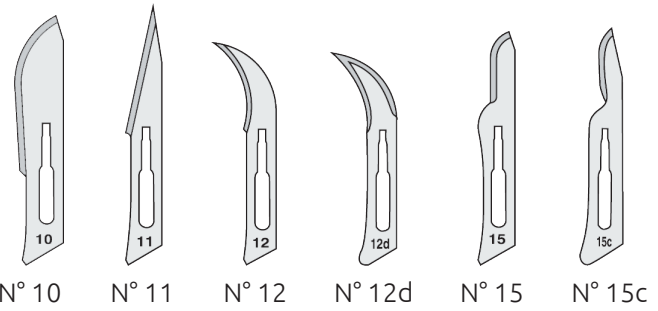


www.sutures.be

SURGICAL BLADES & SCALPEL HANDLES



For blade handle N° 3



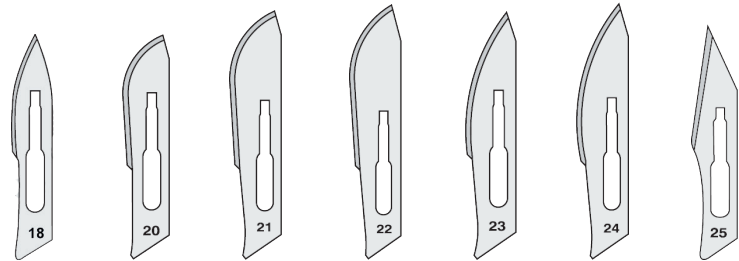
Surgical blades without handle

ZB10 ZB11 ZB12 ZB12d ZB15 ZB15c

Surgical blades with plastic handle

ZBD10 ZBD11 ZBD12 ZBD15

For blade handle N° 4



Surgical blades without handle

ZB18 ZB20 ZB21 ZB22 ZB23 ZB24 ZB25

Surgical blades with plastic handle

ZBD20 ZBD21 ZBD22 ZBD23 ZBD24

STITCH CUTTER



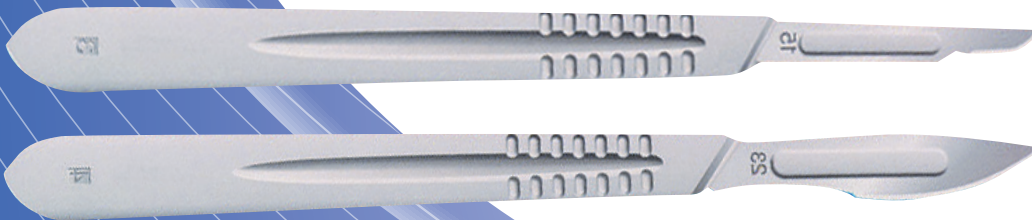
Unit

Order no

100 pc.

ZBS

SCALPEL HANDLES



Product Unit Order no

N° 3 10 pc. **ZBH3**

N° 4 10 pc. **ZBH4**

*For quality
&
safety*



www.sutures.be